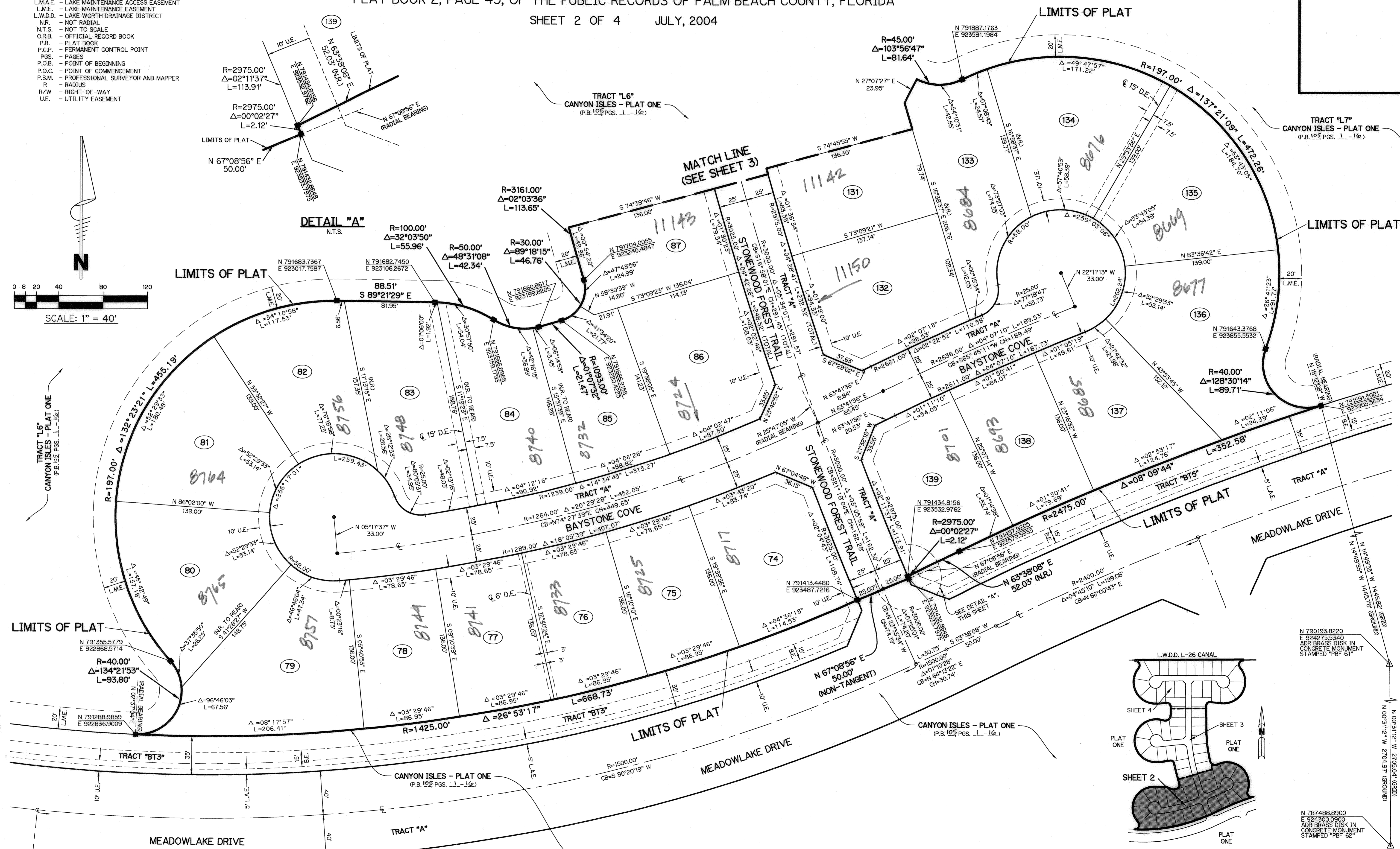
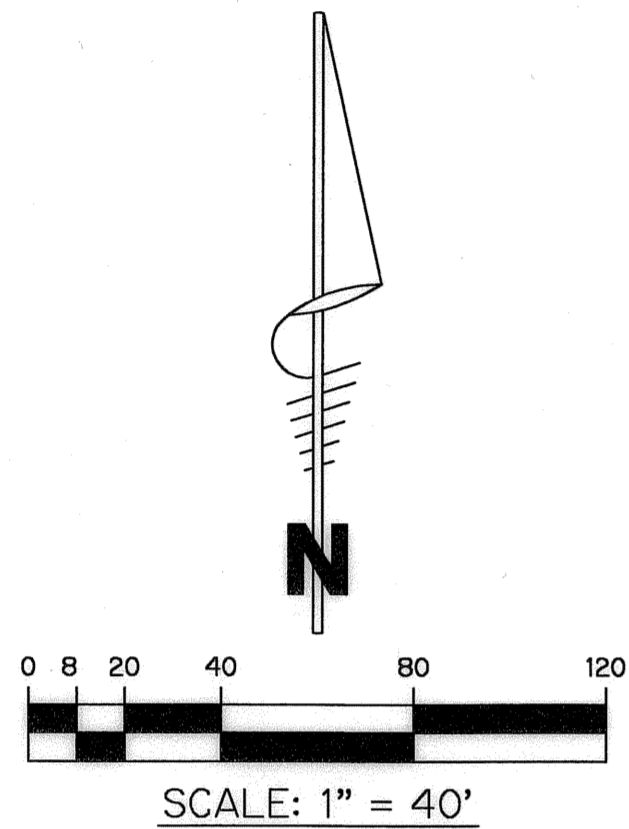


# CANYON ISLES - PLAT TWO

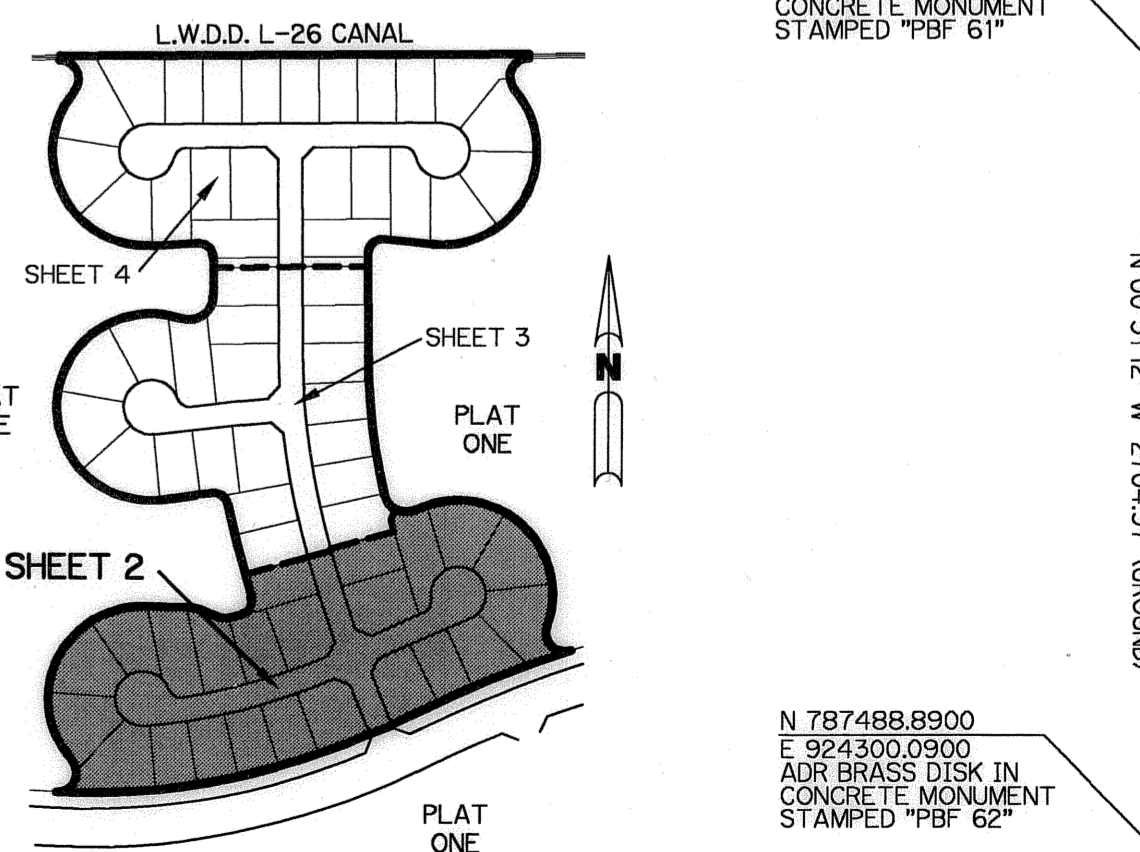
A PARCEL OF LAND IN SECTION 32, TOWNSHIP 45 SOUTH, RANGE 42 EAST,  
PALM BEACH COUNTY, FLORIDA, BEING A PORTION OF TRACTS 10-13, 20-24,  
AND 42-45, BLOCK 59, PALM BEACH FARMS Co. PLAT No.3, RECORDED IN  
PLAT BOOK 2, PAGE 45, OF THE PUBLIC RECORDS OF PALM BEACH COUNTY, FLORIDA

SHEET 2 OF 4 JULY, 2004

- LEGEND:**
- - FOUND PERMANENT REFERENCE MONUMENT, L.B. #6473
  - - SET PERMANENT CONTROL POINT, L.B. #6473
  - - FOUND PERMANENT CONTROL POINT, L.B. #6473
  - △ - DELTA ANGLE
  - BE - BUFFER EASEMENT
  - CB - CHORD BEARING
  - CH - CHORD DISTANCE
  - CL - CENTERLINE
  - DB - DEED BOOK
  - DE - DRAINAGE EASEMENT
  - EA - ARC LENGTH
  - L.A.E. - LIMITED ACCESS EASEMENT
  - L.M.A.E. - LAKE MAINTENANCE ACCESS EASEMENT
  - L.M.E. - LAKE MAINTENANCE EASEMENT
  - L.W.D.D. - LAKE WORTH DRAINAGE DISTRICT
  - NR - NOT RADIAL
  - N.T.S. - NOT TO SCALE
  - O.R.B. - OFFICIAL RECORD BOOK
  - P.B. - PLAT BOOK
  - P.C.P. - PERMANENT CONTROL POINT
  - P.P.S. - PAGES
  - P.O.B. - POINT OF BEGINNING
  - P.O.C. - POINT OF COMMENCEMENT
  - P.S.M. - PROFESSIONAL SURVEYOR AND MAPPER
  - R - RADIUS
  - R/W - RIGHT-OF-WAY
  - U.E. - UTILITY EASEMENT



SUBDIVISION Canyon Isles - Plat 2  
BOOK 41  
FLOOD ZONE F  
QUAD # 50  
SE  
TAZ 750  
PUD NAME Fogg Central



**KEY MAP**  
N.T.S.

N 790193.8220  
E 924275.5340  
ADIR BRASS DISK IN  
CONCRETE MONUMENT  
STAMPED "P.B. 61"

N 791959.5001  
E 923905.5634  
ADIR BRASS DISK IN  
CONCRETE MONUMENT  
STAMPED "P.B. 62"

N 787488.8900  
E 924300.0900  
ADIR BRASS DISK IN  
CONCRETE MONUMENT  
STAMPED "P.B. 62"

SUBDIVISION Canyon Isles - Plat 2  
PAGE 41  
FLOOD MAP # 200 A  
ZONING PDD  
QUAD # 50  
SE  
TAZ 750  
PUD NAME Fogg Central